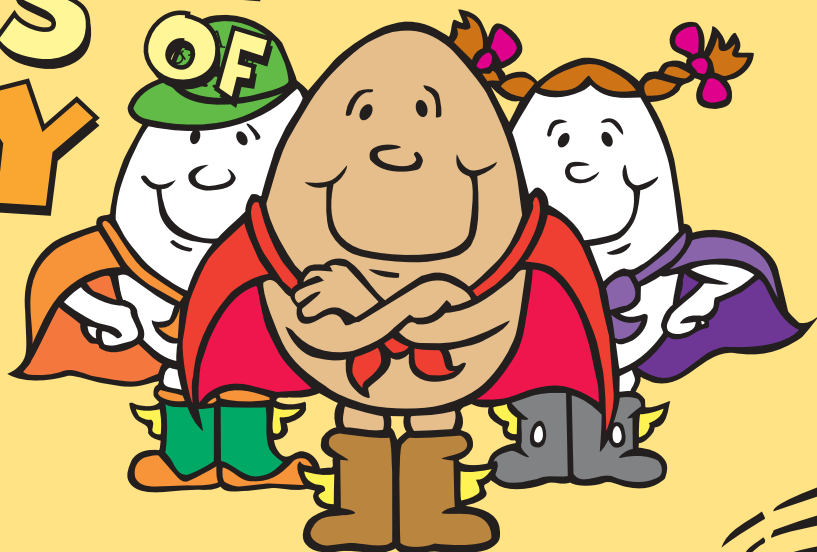
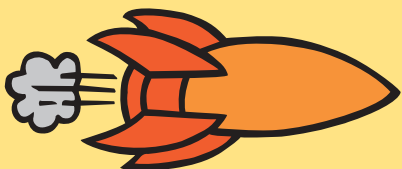


THE EGGS-CELLENT ADVENTURES OF SUNNY AND FRIENDS



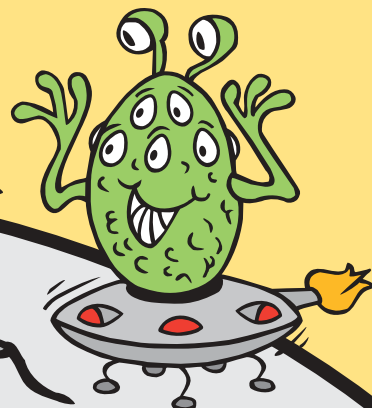
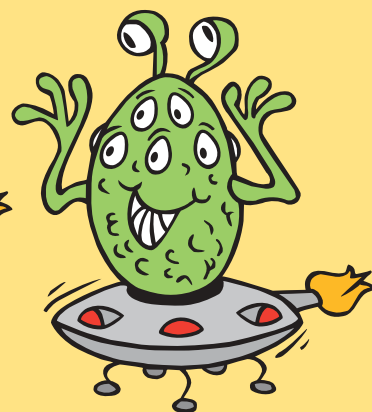
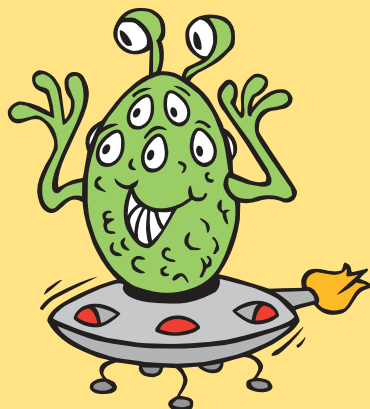
MEET SUNNY

Everyone knows that eggs are out of this world but Sunny and his friends want to see for themselves. Join them as they journey to outer space, battle evil egg-liens, explore our solar system, and eggs-perience a galaxy of adventure.



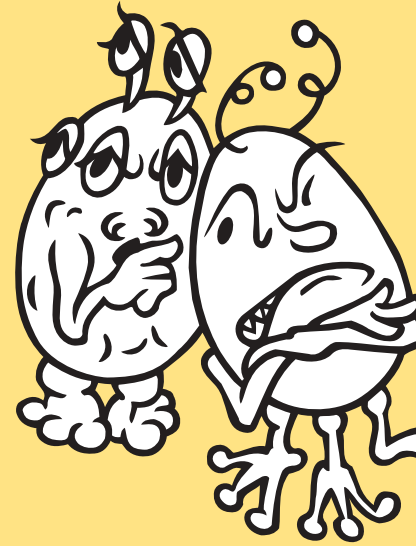
SPOT THE EVIL EGG-LIEN

Sunny is going flying with his friends the good egg-liens. But be careful, one evil egg-lien wants to come and make trouble. Can you spot which evil egg-lien is different from the rest?



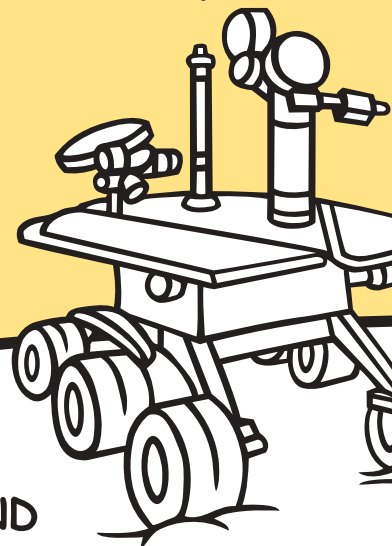
EGG-LIEN DECODER

Sunny has just received word that the evil egg-liens are up to no good. He has intercepted a secret message and needs you to help him decode it. Using the decoder below, can you help Sunny figure out the egg-liens devious plan?



ZERO-GRAVITY EGGS-PERIMENT

Try this trick to amaze your friends. Place a small pile (15 mL) of salt on a table and balance an egg on it. Gently blow away the salt and like magic, the egg stands on its own.



ALWAYS YOLKING AROUND

Q. What do you get when you cross a chicken with a martian?

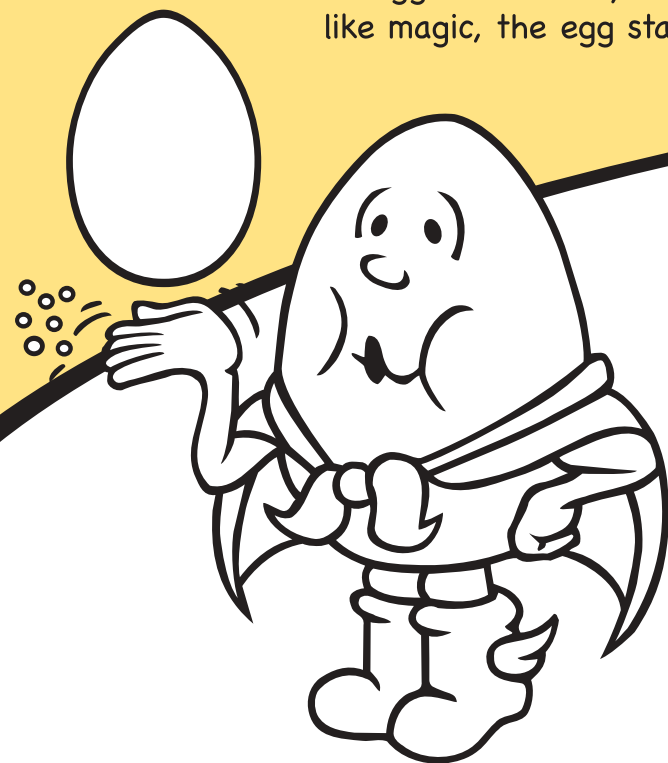
A. An eggs-traterrestrial.

Q. Why did the egg-lien have to move?

A. He was outta space.

Q. What's an egg-lien's favorite type of song?

A. Nep-tunes.



LOST IN SPACE

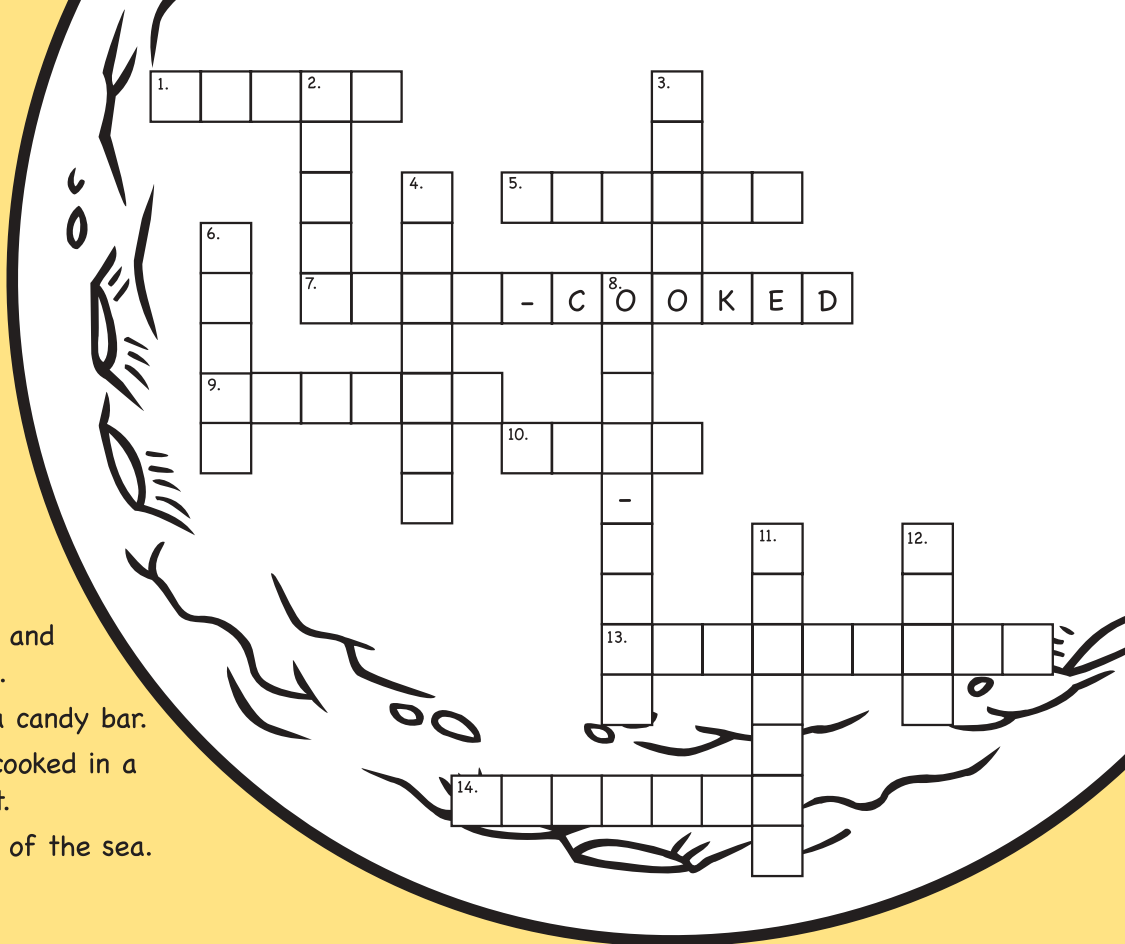
Complete this crossword to help Sunny find the planets and some wonderful ways that eggs can be served.

ACROSS

1. Eggs cooked in skillet until whites are set.
5. Ringed planet, and a type of car.
7. Eggs cooked in hot water for 20 minutes in the shell.
9. Seventh planet from the sun, and the God of the sky and stars.
10. Planet closest to earth, and a candy bar.
13. Eggs whisked with milk and cooked in a skillet over medium-high heat.
14. Windiest planet, and the God of the sea.

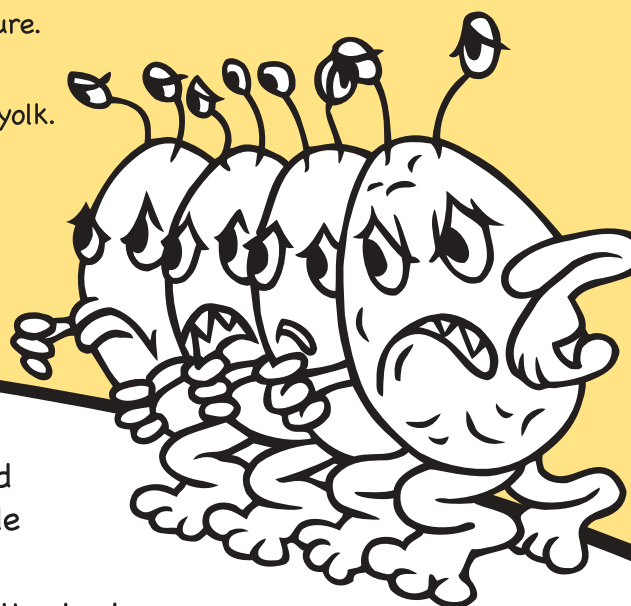
DOWN

2. Our planet.
3. Planet farthest from the sun, and the well-known Disney dog.
4. Planet nearest to the sun, and also used to measure the temperature.
6. Earth's sister planet, and the Goddess of love.
8. Fried eggs cooked on both sides until a white film forms over the yolk.
11. Eggs cooked in barely simmering water for 3-5 minutes.
12. Yellow part of an egg.



MAKE YOUR OWN EGG-LIEN

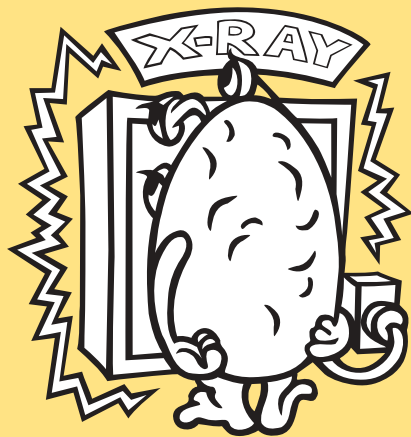
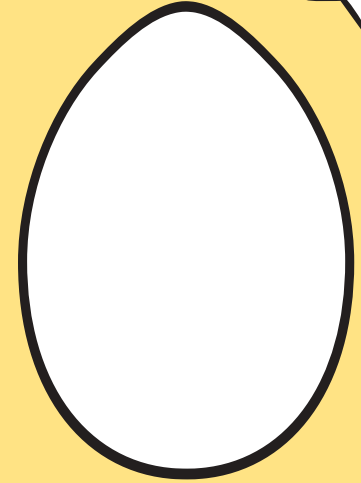
1. Crack an egg in two. Save the contents, cover and refrigerate to cook later. Carefully wash the inside of the shell and pat dry with a paper towel.
2. Using scissors, carefully trim the broken edge of one half of the shell so the edge is even.
3. Put a little white glue on the cut edge to make it stronger.
4. Cut a heavy paper or cardboard base in the shape of large feet.
5. Glue the open end of the eggshell to the feet and let it dry.
6. Attach paper or sticks with glue to form arms and antennae.
7. Paint the little egg-lien any color that you like best.
8. Add features with paint or a felt tipped markers.



SPACE INVASION

Ask a friend to provide the adjectives, nouns, adverbs, colours, numbers, and nouns below—without letting them see the story—to create a silly description of their favorite egg-lien. Then draw a picture of the egg-lien they describe.

_____ 's best friend is _____ the egg-lien. S/he has
 (friend's name) (any name)
 _____ eyes, a _____ nose, and a _____ smile. S/he is
 (number) (adjective) (adjective)
 _____ feet tall and is _____. S/he has _____ warts and
 (number) (colour) (number)
 antennae with _____s on top. S/he has _____ arms
 (shape) (number)
 and _____ legs. S/he talks _____ and laughs like a
 (adjective) (adverb)
 _____. His/her favorite thing is a _____ -second
 (animal) (verb)
 only to playing with you of course!

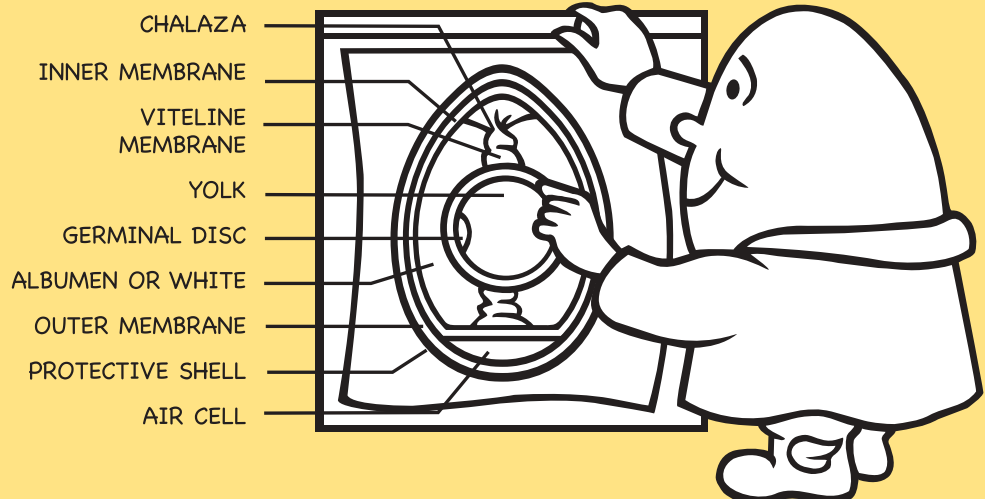


EGG-LIEN AUTOPSY

Egg-liens have a funny language of their own. Unscramble these egg-lien words to discover all the parts of an egg. Then use the mixed-up underlined letters to find out the answer to Sunny's favourite joke.

Why can't an egg-lien concentrate?

_____ !



RIA LECL

RENNI BEMARMEN

LETIVINE MARNEMBE

NIMEGLAR SCID

TEWHI

ZALACHA

ROUTE NMMARBEE

TIREPTOVEC LEHSL

LOKY



For more information, recipes or copies of this activity sheet, contact your provincial egg organization. Contact information is available online at www.canadaegg.ca.

Canadian Egg Marketing Agency
 1501-112 Kent Street, Ottawa, Ontario K1P 5P2

ANSWERS
 PAGE 1: SPOT THE EVIL EGG-LIEN - Top right egg-lien is the evil egg-lien. PAGE 2-3: EGG-LIEN DECODER - ALL SYSTEMS GO! ATTACK AT TWELVE. BRING YOUR SPACESHIP AND BE READY! LOST IN SPACE - Across: 1. FRIED 5. SATURN 7. HARD-COOKED 9. URANUS 10. MARS 13. SCRAMBLED 14. NEPTUNE Down: 2. EARTH 3. PLUTO 4. MERCURY 6. VENUS 8. OVEREASY 11. POACHED 12. YOLK PAGE 4: EGG-LIEN AUTOPSY - HE SPACES OUT!